



# EVERY DRIVE



**DIESEL ENGINES FOR PUMP APPLICATIONS**

## Cummins Presence in Pump Industry



Cummins, a global power leader, is a corporation of complementary business units that design, manufacture, distribute and service engines and related technologies including fuel systems, controls, air handling, filtration, emission solutions and electrical power generation systems. Headquartered in Columbus, Indiana (USA), Cummins serves customers in more than 160 countries through its network of 550 distributor facilities and more than 5,000 dealer locations. With more than 28,000 employees worldwide, Cummins reported sales of \$ 8.4 billion in 2004.

Cummins in India has been closely associated with the pump industry for the past four decades by offering dependable diesel engines to key industry segments like Petrochemicals and Refinery, Ports and Terminals, Power Plants, Steel, Water Supply & Irrigation.

With over 4000 + dependable engines manufactured at it's state of the art facilities at Pune, powering various applications like fire fighting pumps, industrial pumps, mud pumps, dredger pumps and off shore applications, Cummins is clearly the market leader and the preferred choice of OEMs, consultants, packagers, institutional buyers and end users.

## Dependable Drive for Every Application

Whether it is a drive for a fire fighting pump set at a multipurpose chemical terminal or a continuous duty application for water supply / irrigation, you can count on Cummins for a reliable power source. This strength is demonstrated by the fact that Cummins powers the widest range of pump applications produced by leading pump manufacturers in the country. All this backed with the industry's longest warranty and "Best in Class" after-sales service network including remotest locations.

## Customised Value Packages

With the right technology backed by Global Experience, Cummins offers customised value packages for a variety of pump applications and is the only engine manufacturer in the country to power a wide range of the pump industry from 265 to 1885 hp. Cummins expertise in application engineering offers latest technology engine with cooling, exhaust, air intake and fuel control systems fully integrated with the pump design for optimum performance of the system.

### Cummins Value Package for pump applications include :

- Electronic Control Panel with scanning option for critical engine parameters
- Safety Controls
- Cold Starting Kit
- Heat Exchangers suitable for sea water applications
- Dual Starting System (air/electric)
- Customized Air intake, Exhaust and Cooling system
- Suitable Flywheel/Housing

With Cummins, you not only get a better engine, but also a better installation.

## Cummins Power Range for Fire Fighting Pumps

Engine Model	Configuration	Aspiration	Capacity (Litre)	Rated Power (HP @1500 RPM)	Rated Power (HP @1800 RPM)	Rated Power (HP @2100 RPM)
NT-855-F1 (BC)	6-in line	T	14	300	340	---
NT-855-F (BC)	6-in line	T	14	340	395	300
NTA-855-F (BC)	6-in line	TA	14	380	420	360
KT-1150-F	6-in line	T	19	---	---	400
KTA-1150-F	6-in line	TA	19	450	495	534
KTA-19-F3-I	6-in line	TA	19	540	620	---
KTA-19-F	6-in line	TA	19	600	680	---
VTA-28-F3	12-Vee	TA	28	710	730	---
VTA-28-F5	12-Vee	TA	28	750	815	712
KTA-38-F	12-Vee	TA	38	850	1030	---
KTA-38-F1	12-Vee	TA	38	1080	1220	1085
KTA-38-F2	12-Vee	TA	38	1180	1350	---
KTA-50-F	16-Vee	TA	50	1541	1742	1447
KTA-50-F1	16-Vee	TA	50	1735	1885	---

**Note :** T = Turbocharged , TA = Turbocharged Aftercooled. Above ratings are suitable for 10% overload for 1 hour in every 12 hours

## Cummins Power Range for Industrial Pumps (Continuous Duty)

Engine Model	Configuration	Aspiration (Litre)	Capacity	Rated Power (HP @1500 RPM)	Rated Power (HP @1800 RPM)
NT-855-P1 (BC)	6-in line	T	14	265	310
NT-855-P (BC)	6-in line	T	14	310	340
NTA-855-P (BC)	6-in line	TA	14	365	375
KT-1150-P	6-in line	T	19	328	365
KTA-1150-P	6-in line	TA	19	393	472
KTA-19-P	6-in line	TA	19	475	575
VTA-1710-P	12-Vee	TA	28	517	620
VTA-28-P	12-Vee	TA	28	660	675
KTA-38-P	12-Vee	TA	38	880	1040
KTA-50-P	16-Vee	TA	50	1206	1340
KTA-50-P1	16-Vee	TA	50	1475	1640

## Standard Scope & Options

As a standard scope Cummins offers engine with Engine Mounted Air Cleaner, Dry Type Exhaust Manifold, Industrial Silencer, Electronic Governor, Cummins PT Fuel System, Simplex Type Filter Elements for Fuel and Lube Oil, 24 Volt DC Starter, Heat Exchanger Cooling, Fly wheel to suit SAE standards, Safety Controls for Low Lube Oil Pressure, High Water Temperature [Alarms for Fire Fighting Pump Application (or) Trips for Industrial Pump Application] & Over Speed Trip, Pilot Bored Coupling & Water Heater, Thermo Static Switch (230 V AC) (for Fire Fighting Pump Application)

The optional Items are : Residential Silencer, Spark Arrestor, Mechanical Variable Speed Governor, Duplex Type Filter Elements for Fuel and Lube Oil, Air / Dual Starting, Radiator Cooling.

## Major Installations

### PETROCHEMICALS & REFINERY



3 x NTA - 855 F  
Bharat Petroleum Corporation,  
Loni



5 x NT - 855 F (BC)  
Reliance Industries,  
Rewari



3 x KTA - 19 F  
Indian Oil Corporation,  
Panipat

### PORTS & TERMINALS



3 x VTA - 1710 F  
Visakhapatnam Port Trust,  
Visakhapatnam



5 x VT - 1710 F2  
Mumbai Port Trust,  
Mumbai

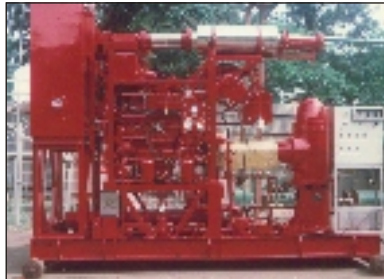


3 X VTA - 1710 F3  
Dolareh Bulk Terminal Project,  
Sharjah

### OTHERS



**Water Supply & Irrigation**  
16 x VTA - 1710 P  
Ministry of Irrigation,  
Angola



**Offshore**  
1 x NTA - 855 F (BC)  
ONGC (L & T),  
Bombay High



**Offshore**  
3 x KTA - 1150 F  
ONGC (Mazgaon Dockyard),  
Bombay High

## MAJOR OEMs, Consultants & Inspection Agencies, Contractors

**OEMs** : Kirloskar Brothers, Mather & Platt, Voltas, Worthington Pumps, Flowmore, Beacon Weir.

**Consultants & Inspection Agencies** : EIL, IRS, Bax Counsel, LRS, RITES, Bechtel, BHEL, DGS&D, MECON, Jacobs H&G, KPG, Toyo, TCE, ABS, PGCIL.

**Contractors** : L&T, Steelage, Technofire, Tyco, Vijay, Hydrotech, Alertsafety, Unitech.



# Major Installation List

Segment / Customer	Place	Engine Model	Qty	Project/Application
<b>Petrochemicals and Refinery</b>				
Bharat Petroleum Corporation	Mahul	KTA-19 F3	1	Refinery
	Various	NTA-855 F	40	LPG Bottling plants / Depots
Chennai Petroleum Corporation	Chennai	VTA-1710 F1	3	Refinery
Kochi Refineries	Kochi	KT-1150 F/KTA-1150 F	5	Refinery
	Kochi	VT-1710 F1	1	Refinery
Gas Authority of India	Guna	KTA-1150 F	2	Refinery
Hindustan Petroleum Corporation	Various	NTA-855 F	15	LPG Bottling plants / Depots
Indian Oil Corporation	Mundra	KTA-1150 F	3	Refinery
	Barauni	KTA-1150 F	8	Refinery
	Vadodara	KTA-1150 F	4	Refinery
	Various	NTA-855 F	65	LPG Bottling plants / Depots
	Rajkot	NTA-855 F (BC)	2	Pipeline Project (Crude / Product)
	Haldia	VTA-1710 F3	3	Refinery
	Vadodara	VTA-28 F3	1	Refinery
	Panipat	KTA-19 F	3	Refinery
Reliance Industries	Various	NT-855 F(BC)	21	Multi Purpose Chemical Terminals
<b>Ports and Terminals</b>				
Cochin Port Trust	Kochi	VT-1710 F1	1	Loading & Unloading terminal
Haldia Port Trust	Haldia	VTA-1710 F3	2	Loading & Unloading terminal
Hoogly Dockyard	Hoogly	NTA-855 G2P	2	Dredger
Indian Oil Tanking	Mumbai	NT-855 F(BC)	3	Chemical Storage Terminal
LNG Petronet	Dahej	KTA-2300 F1	4	LNG Receiving and Regasification Terminal
Mumbai Port Trust	Mumbai	VT-1710 F2	5	Loading & Unloading terminal
National Petroleum Construction Corporation (thro' Cochin Shipyard)	Abu Dhabi	KTA-19 M3 F	1	Ballast Pump for Unmanned Barge
Dolareh Bulk Terminal Project	Sharjah	VTA-1710 F	3	Loading & Unloading terminal
New Mangalore Port Trust	Mangalore	KTA-2300 F1	4	Loading & Unloading terminal
Paradeep Port Trust	Paradeep	KTA-19 F	1	Loading & Unloading terminal
	Paradeep	NTA-855 F(BC)	1	Loading & Unloading terminal
Visakhapatnam Port Trust	Visakhapatnam	KTA-1150 F	3	Loading & Unloading terminal
	Visakhapatnam	VTA-1710 F	3	Loading & Unloading terminal
<b>Steel</b>				
Tata Iron & Steel Company	Jamshedpur	VTA-1710 P	2	Iron & Steel manufacturing unit
	Ranchi	VTA-1710 P	2	Iron & Steel manufacturing unit
	West Bokaro	KTA-1150 F	1	Iron & Steel manufacturing unit
Jindal Steel	Raigarh	KTA-1150 F	2	Iron & Steel manufacturing unit
<b>Water Supply &amp; Irrigation</b>				
Government of Rajasthan	Rajasthan	KTA-50-P	1	Irrigation
Ministry of Irrigation	Angola	NTA-855 P(BC)	18	Water Supply
	Angola	VTA-1710 P	16	Water Supply
Ministry of Irrigation	Jordan	NT-855 P (BC)	4	Irrigation
PHE, Mizoram	Mizoram	KTA-2300 P	1	Irrigation
	Mizoram	KTA-3067 P	1	Irrigation
	Mizoram	NT-855 P (BC)	1	Irrigation
Ministry of Irrigation	Sudan	VTA-1710 P	4	Irrigation
<b>Power</b>				
National Thermal Power Corporation	Various	Various	24	Power Generation
Nuclear Power Corporation	Various	Various	12	Power Generation
<b>Chemicals &amp; Fertilisers</b>				
IndoGulf (Birla Copper)	Dahej	KT-1150 F	2	Copper Extrusion Plant
	Dahej	NT-855 F(BC)	1	Copper Extrusion Plant
	Dahej	VT-1710 F1	1	Copper Extrusion Plant
Oman Fertilizers	Oman	Various	8	Fertilizer
<b>Automobiles</b>				
General Motors	Vadodara	NT-855 F(BC)	2	Car Manufacturing Unit
<b>Offshore</b>				
Oil and Natural Gas Corporation	Bombay High	NTA - 885 F(BC)	1	Offshore Platform
	Bombay High	KTA - 1150 F	3	Offshore Platform

**"Best in Class"  
Cummins Service Network**



**Cummins Zonal Offices**

Location	STD Code	Telephone	Fax	Email
Bangalore	(080)	23613831 / 23611958	23614552	ashok.sharma@cummins.co.in
Mumbai	(022)	22663566 / 22662247	22660790	ambadas.v.nerlikar@cummins.com
Kolkata	(033)	22472481 / 22470774	22473833	kamal.k.bhowmick@cummins.co.in
New Delhi	(011)	26416947 / 26445756	26212817	vivek.n.deshmukh@cummins.com
Raipur	(0771)	2521301 / 2521311	2521103	rewati.kaul@cummins.co.in



**Cummins India Limited**  
Kothrud, Pune - 411 038  
Tel. : 020-25385435 / 25380240  
Fax : 020-25381591 / 25380125  
Ghanendra.K.Sharma@Cummins.com  
Dhananjay.B.Purohit@Cummins.com

**Cummins Diesel Sales & Service (I) Limited**  
35/A/1/2, Erandwana, Pune - 411 038  
Tel. : 020-25431234 / 25430066  
Fax : 020-25439490

Visit us at : [www.cumminsindia.com](http://www.cumminsindia.com)

**Making people's lives better by unleashing the Power of Cummins**

Cummins has always been a pioneer in product improvement. Thus specifications are subject to change without prior notice. Illustrations may include optional equipment